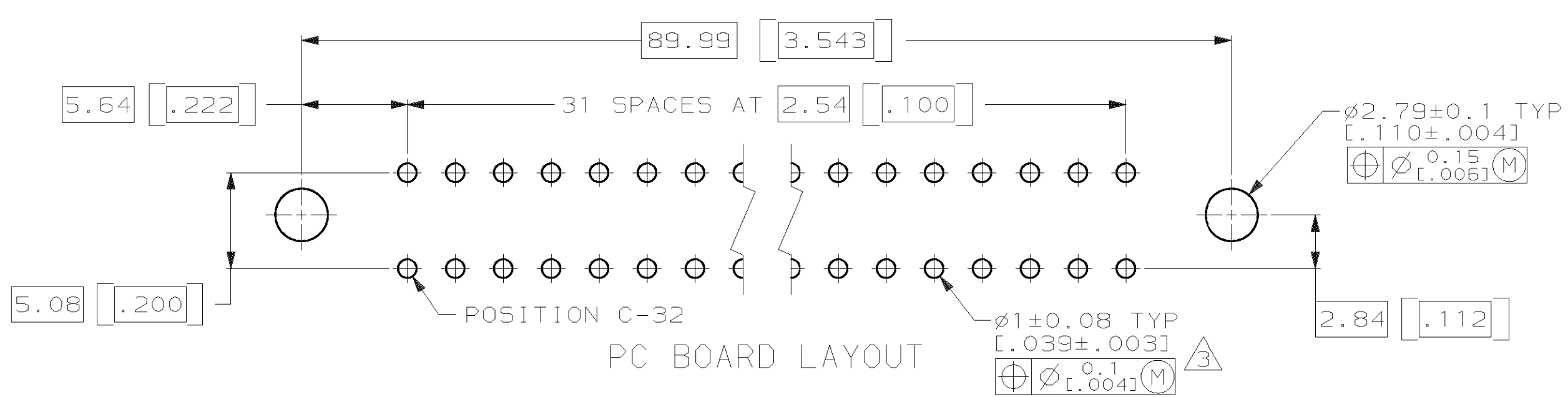
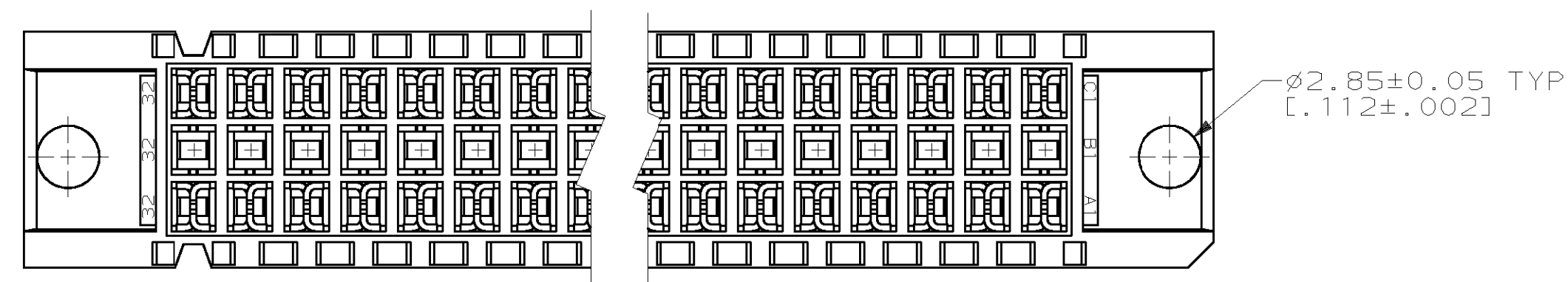
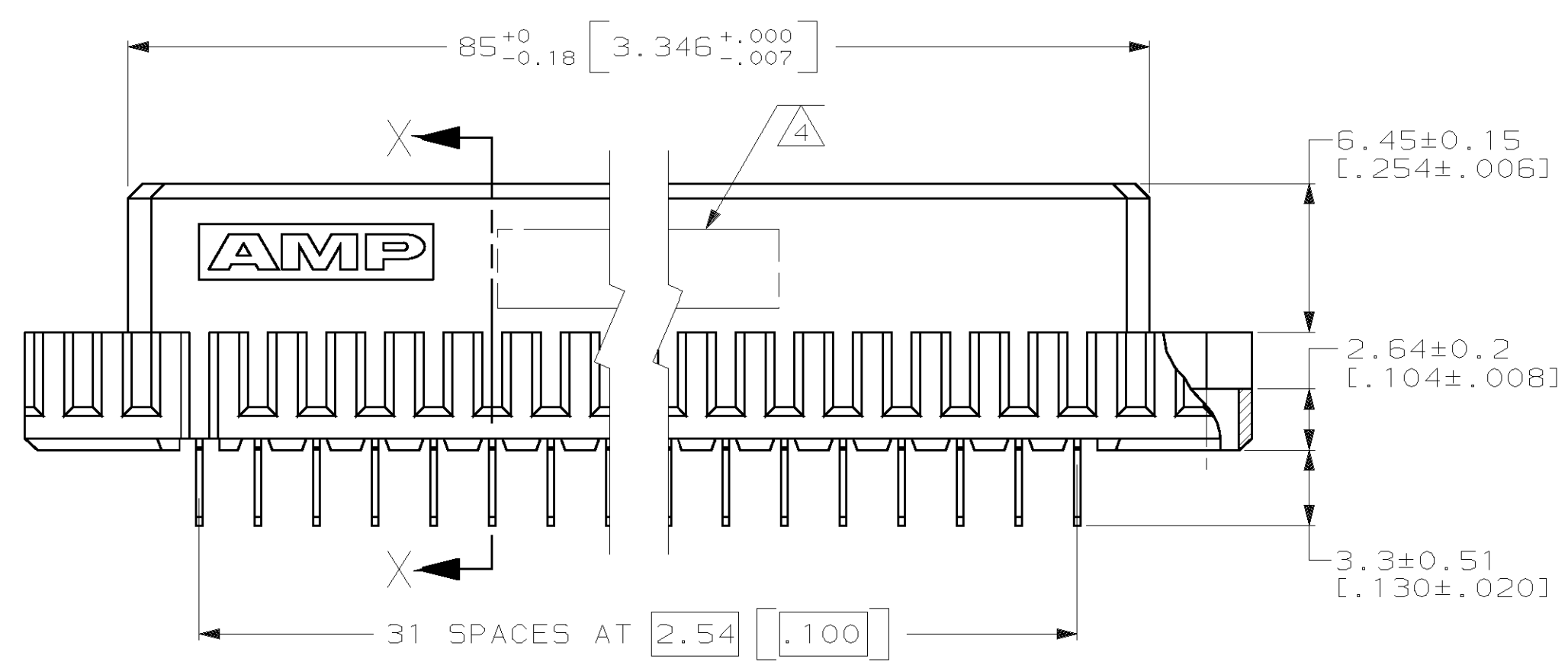
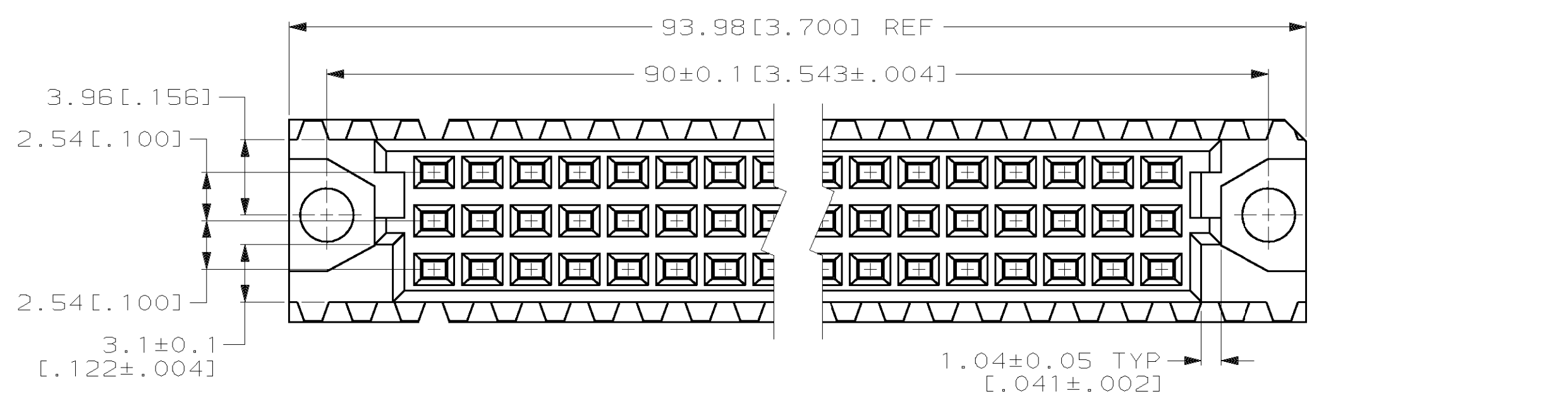
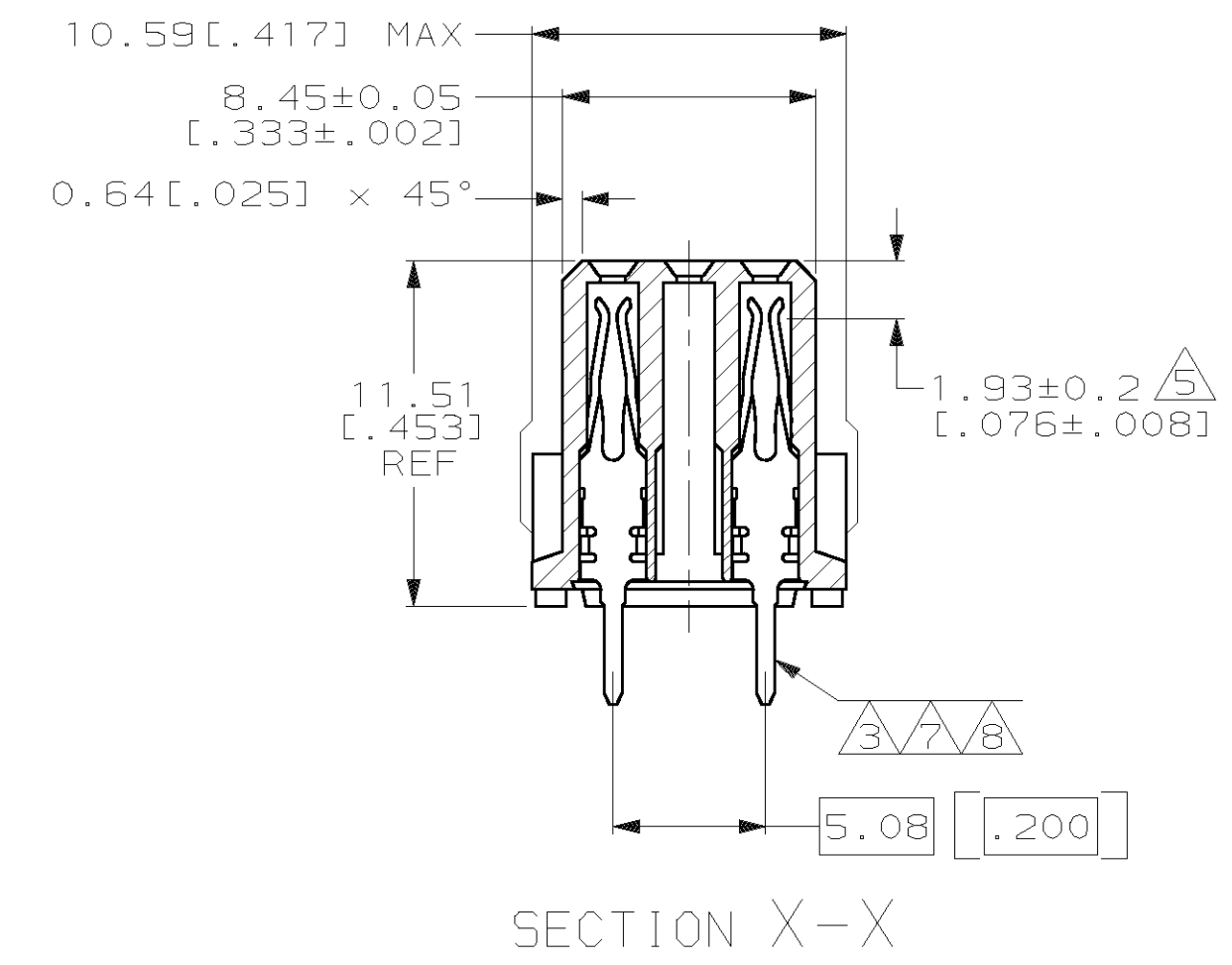


LOC		DIST		REV		REVISIONS		DATE	APPD
AD	25	P	F	ZONE	LTR	DESCRIPTION			
				E	EC	0010-1488-95		4/1/96	CR
				F	REV PER EC	001B-0367-00		09 JAN 01	CR



- ① HOUSING MATERIAL: GLASS-FILLED POLYESTER. COLOR: GRAY.
- ② CONTACT MATERIAL: PHOSPHOR BRONZE.
- ③ CONTACT FINISH: 0.00076 [.000030] GOLD IN CONTACT AREA. 0.00127 [.000050] NICKEL UNDERPLATE ALL OVER. TIN-LEAD PLATE ON POSTS.
- ④ PART NUMBER, DATE CODE IDENTIFICATION, CSA LOGO IN THIS APPROXIMATE AREA, ON REVERSE SIDE.
- ⑤ CONTACT POINT.
- ⑥ RECOMMENDED HOLE SIZE FOR MANUAL APPLICATION OF CONNECTOR ONTO PC BOARD.
- ⑦ CONTACT FINISH: DIN 41612 CLASS 3 IN CONTACT AREA. TIN-LEAD PLATE ON POSTS.
- ⑧ CONTACT FINISH: DIN 41612 CLASS 2 IN CONTACT AREA. TIN-LEAD PLATE ON POSTS.



	POSITIONS LOADED	ROWS	NO. OF LOADED POSITIONS	PART NUMBER
OBSOLETE	1-32	C	32	650956-9
	NONE	B	0	
	1-32	A	32	650956-5
	NONE	B	0	
SUPERSEDED BY 650956-5	1-32	A	32	650956-4
	NONE	B	0	
	1-32	A	32	

DO NOT SCALE PRINT. UNLESS SPECIFIED DIMENSIONS IN mm [INCHES] TOLERANCES ON: 1 PLC DEC ± - 2 PLC DEC ± 0.13 [.005] ANGLES ± -	DR L. BRINER 1/23/91 CHK N. DRASHER 12/31/91 APPD N. DRASHER 12/31/91 APPD K.R. PARMER 12/31/91	AMP INCORPORATED Harrisburg, Pa. 17105		
HOUSING: ① CONTACT: ②	NAME K.R. PARMER PRODUCT SPEC	EUROCARD, RECEPTACLE ASSEMBLY, TYP C		
FINISH CONTACT: ③ ⑦ ⑧	APPLICATION SPEC	SIZE D	FSCM NO 00779	DRAWING NO 650956
	WEIGHT	SCALE 4:1		SHEET 1 OF 1